

STRIDE
HIATUS
ANDY
REACH
DEFLECT
CUSP
DELTA
WHEAT
CARRARA
STREAM
PLACID
BURL
OAT
BIRCH
STONE
GLOW
ADRIFT
MEADOW
STREAM
LIMESTONE
SUAVE
THATCH
CORK
CANVAS
TAHINI
NATURAL

SILICA LARGE SCALE

Technical Information

Width/ Pattern	Fabric Grade	Fiber Content & Backing	Weight	Abrasion Resistance	Light- fastness	Approx. Repeats	Cl. Code
54" Silica Andy 🔥👉☀️🌟⚠️	7	100% Silicone Polyester Backing	1.72 lb./ linear yard	500,000 Double Rubs	200 Hours Class 4.5	25" L, 19 5/8" H	WS Bleach Cleanable (4:1) Virox 5 Cleanable
54" Silica Cusp 🔥👉☀️🌟⚠️	7	100% Silicone Polyester Backing	1.64 lb./ linear yard	500,000 Double Rubs	200 Hours Class 4.5	12 1/2" L, 12 3/8" H	WS Bleach Cleanable (4:1) Virox 5 Cleanable
54" Silica Deflect 🔥👉☀️🌟⚠️	7	100% Silicone Polyester Backing	1.53 lb./ linear yard	500,000 Double Rubs	200 Hours Class 4.5	25" L, 13 3/4" H	WS Bleach Cleanable (4:1) Virox 5 Cleanable
54" Silica Hiatus 🔥👉☀️🌟⚠️	7	100% Silicone Polyester Backing	1.71 lb./ linear yard	500,000 Double Rubs	200 Hours Class 4.5	12 3/8" L, 24 1/2" H	WS Bleach Cleanable (4:1) Virox 5 Cleanable
54" Silica Reach 🔥👉☀️🌟⚠️	7	100% Silicone Polyester Backing	1.61 lb./ linear yard	500,000 Double Rubs	200 Hours Class 4.5	12 1/2" L, 11 5/8" H	WS Bleach Cleanable (4:1) Virox 5 Cleanable
54" Silica Stride 🔥👉☀️🌟⚠️	7	100% Silicone Polyester Backing	1.70 lb./ linear yard	500,000 Double Rubs	200 Hours Class 4.5	24 3/4" L, 24 3/4" H	WS Bleach Cleanable (4:1) Virox 5 Cleanable

EXPLANATION OF ACT ICONS FOR UPHOLSTERY

🔥 Fire Retardancy

Flammability testing determined as fabric's resistance to burning.

PASSES California 117 2013

👉 Colorfastness to Wet and Dry Crocking

Colorfastness to wet & dry crocking refers to the rubbing off of color from the fabric onto clothing, hands or other materials and can occur under wet or dry conditions.

PASSES AATCC 8-1974 Dry Crocking: Class 4 minimum; Wet Crocking: Class 3 minimum

☀️ Colorfastness to Light

Colorfastness to light is the degree to which fabric will retain its color when exposed to light.

PASSES AATCC 16A-1974 or AATCC 16E-1976; Class 4 minimum at 40 hours

NOTE: Class 4 minimum at 60 hours is recommended for direct sunlight exposure situations.

🌟 Physical Properties

3 physical property tests include: brush pill test to determine a fabric's pilling. Breaking/tensile strength is the ability of a fabric to withstand tension without breaking or tearing. Seam slippage is the pulling apart of fabrics at the seams.

PASSES Brush Pill ASTM D3511, 3–4 minimum
Breaking Strength ASTM D3597-D1682-64 (1975)
50 lbs. minimum in warp & weft

Abrasion

Abrasion is the ability of a fabric to withstand damage from wear and rubbing. There is a general contract specification as well as heavy duty specification.

PASSES

⚠️ (Heavy Duty) ASTM 3597 modified (#10 cotton duck); 30,000 double rubs Wyzenbeek Method or ASTM D4966 (with 21 oz. weight); 40,000 rubs Martindale Method

Cleaning Code Definitions

WS Water-based cleaning agents or foam.

Manufacturer recommends using a damp warm cloth after cleaning with bleach solution or Virox 5 followed by a dry clean cloth.

Please visit manufacturer's website for cleaning guide at www.themomgroup.com

M O M E N T U M T E X T I L E S

For additional colors or to view our entire fabric collection, visit allseating.com

72^{HR}EXPRESS 5^{DAY}EXPRESS

*All colors marked with an asterisk are part of our 72HR and 5DAY Express programs.

Toronto Office: 5800 Avebury Road, Unit 3, Mississauga, ON L5R 3M3
Chicago Office: Suite 210, 325 North Wells Street, Chicago, IL 60654
New York Showroom: 1140 Broadway, Suite 902, NYC 10001
www.allseating.com T 1 800 563 3502 F 1 800 272 9911

*By appointment only. SKU: BF9837 Printed in Canada 01/2017

allseating 

allseating 



SILICA STRIDE Limestone*



E cru*



Limestone*



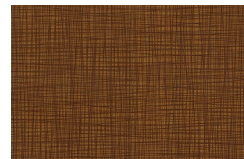
Tidal*



Wheat*



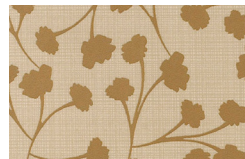
Placid*



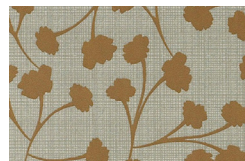
Burl



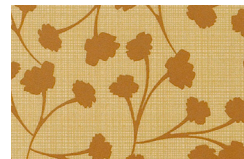
SILICA HIATUS Carrara*



Birch*



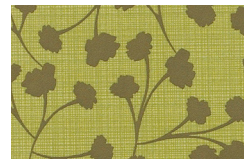
Stone*



Glow



Natural



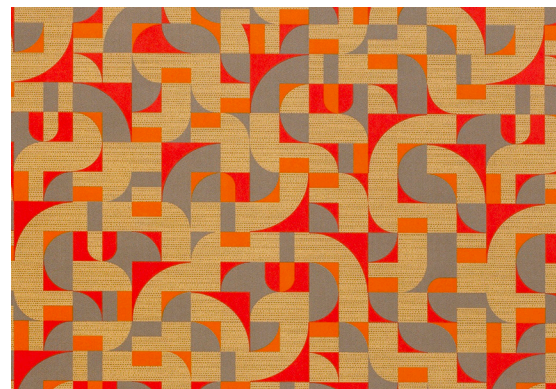
Meadow



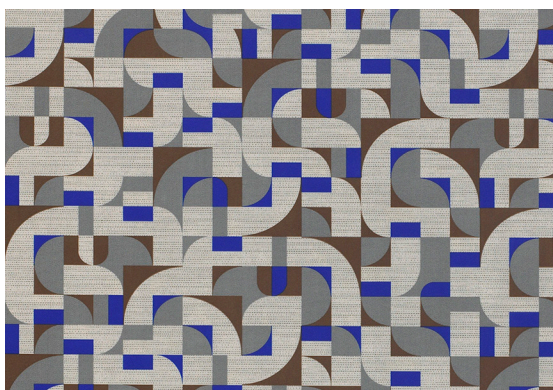
Stream*



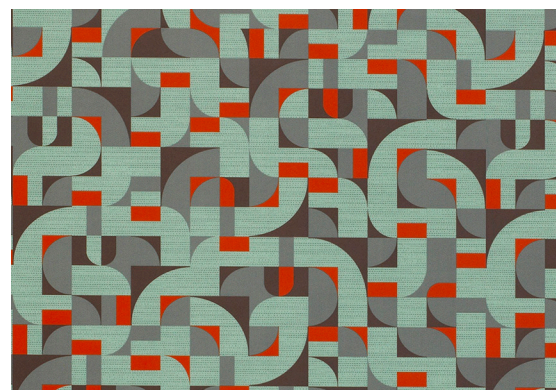
SILICA ANDY Fizz



Suave



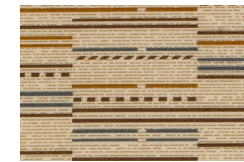
Mega



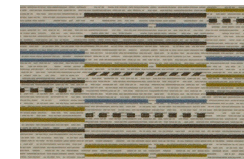
Blithe



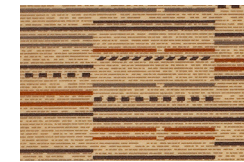
SILICA REACH Canvas



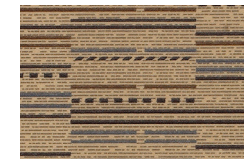
Tahini



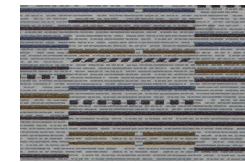
Mint



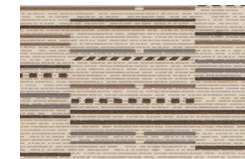
Cork



Thatch



Delta



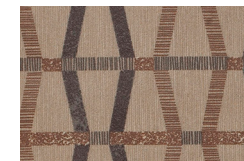
Canvas



SILICA DEFLECT Oat



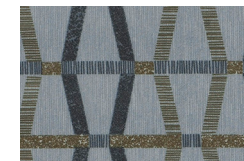
Shore



Wenge



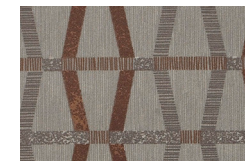
Oat



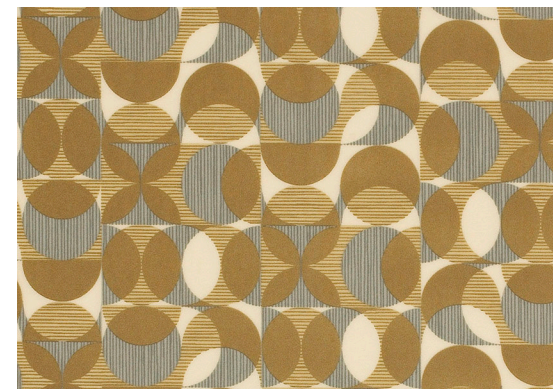
Adrift



Spruce



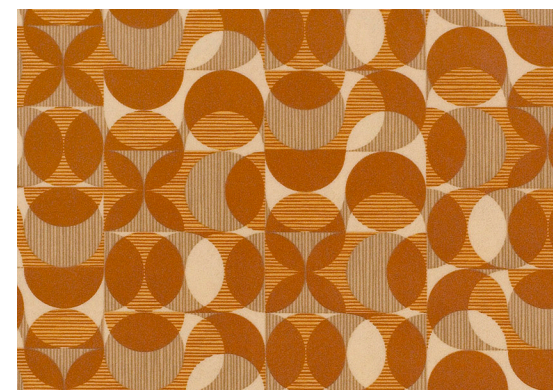
Gull



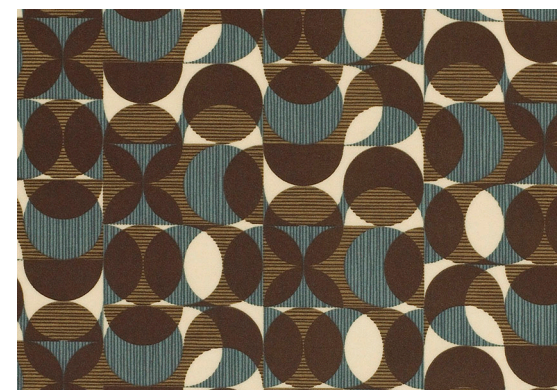
SILICA CUSP Coir



Pier



Amber



Java