

INFINITY
MARATHON
SOLACE
FUSE
COVER CLOTH
CANTER
GROOVE
BEELINE
SILICA
LEATHER
STRIDE
HIATUS
AZUREAN
NICKEL
LANTERN
PLATINUM
EUCALYPTUS
MARIGOLD
DEMURE
BARLEY
NERO
STREAM
GRAPHITE
LIMESTONE
QUARRY
CARRARA

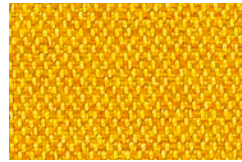
EXPRESS



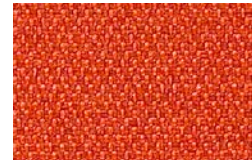
INFINITY Pewter



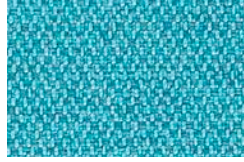
Dove



Maize



Papaya



Rinse



Graphite



Eclipse



MARATHON Tint



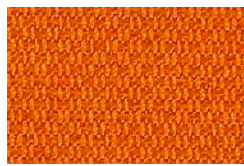
Flax



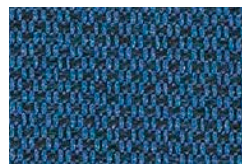
Rain



Sprite



Lantern



Fluorite



Storm



SOLACE Pear



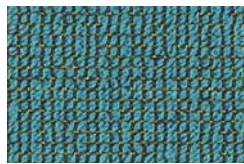
Fossil



Nickel



Mineral



Azul



Carmine



Ebony



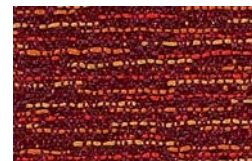
FUSE Lunar



Pristine



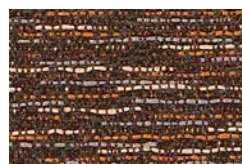
Ginger



Carmine



Azurean



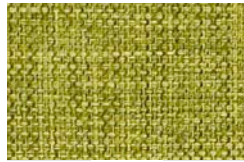
Walnut



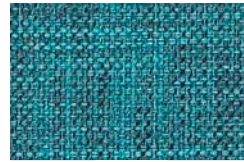
Pepper



COVER CLOTH Platinum



Sorrel



Cyan



Taupe



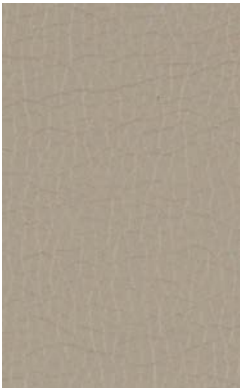
Vesper



Hickory



Graphite



CANTER Quarry



Earth



Baltic



Storm



Ink



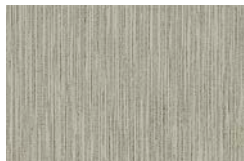
Iron



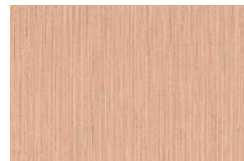
Onyx



GROOVE Polar



Stone



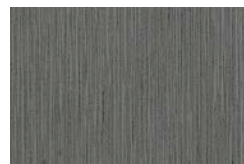
Demure



Digital



Vapor



Harbor



Expanse



BEELINE Sprout



Cork



Eucalyptus



Walnut



Geyser



Nimbus



Forge



SILICA Cumulus



Quartz



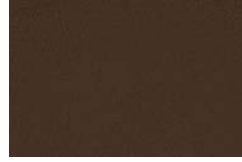
Marigold



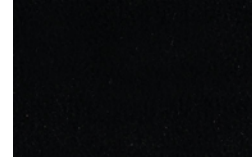
Sketch



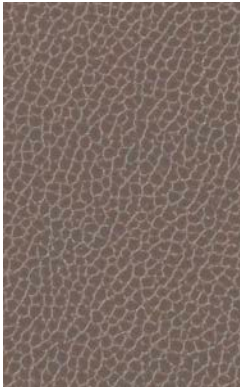
Appletini



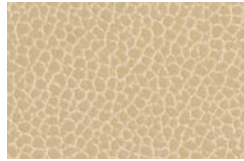
Terra



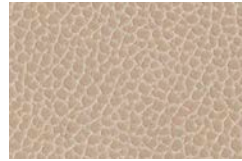
Nero



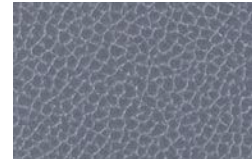
SILICA LEATHER Shadow



Barley



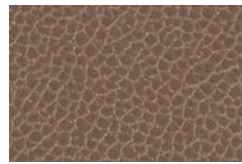
Dove



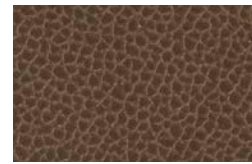
Denim



Marigold



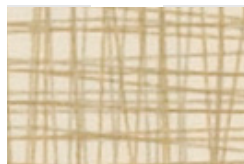
Driftwood



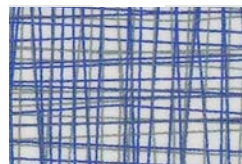
Mink



SILICA STRIDE Citrus



Ecru



Royal



Tidal



Limestone



Wheat



Placid



SILICA HIATUS Carrara



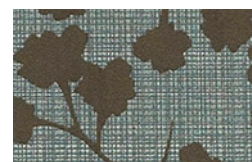
Stone



Birch










Mineral



Stream

Technical Information

Width/ Pattern	Fabric Grade	Fiber Content & Backing	Weight	Abrasion Resistance	Light- fastness	Approx. Repeats	Cl. Code
54" Beeline     	4	100% Polyurethane / PVC Free Polyester Backing	1.32 lb./linear yard	500,000 Double Rubs	200 Hours Class 4.5	N/A	W Bleach Cleanable (4:1)
54" Canter     	3	100% Polyurethane / PVC Free Polyester Backing	1.24 lb./linear yard	240,000 Double Rubs	200 Hours Class 4.5	N/A	W Bleach Cleanable (4:1)
59" Cover Cloth     	5	56% Repreve® Post Consumer Recycled Polyester, 44% Polyester	0.88 lb./linear yard	200,000 Double Rubs	40 Hours Class 4	N/A	W Bleach Cleanable (10:1)
54" Fuse     	3	65% Post Industrial Recycled Polyester, 35% Post Consumer Recycled Polyester Latex Backing	0.78 lb./linear yard	100,000 Double Rubs	40 Hours Class 4.5	N/A	WS
54" Groove     	5	54% Polyester, 46% Polyurethane / PVC Free Polyester Backing	1.63 lb./linear yard	500,000 Double Rubs	200 Hours Class 3.5	22.44" L, 14.875" W	W Bleach Cleanable (4:1)
57" Infinity     	4	74% Post Consumer Recycled Polyester, 26% Polyester Acrylic Backing	0.82 lb./linear yard	200,000 Double Rubs	40 Hours Class 4	.125" L, .625" W	WS
57" Marathon     	4	75% Post Consumer Recycled Polyester, 25% Polyester Acrylic Backing	0.81 lb./linear yard	200,000 Double Rubs	40 Hours Class 4	.125" L, .125" W	WS
54" Silica     	7	100% Silicone Polyester Backing	1.60 lb./linear yard	365,000 Double Rubs	200 Hours Class 4.5	N/A	WS
54" Silica Leather     	7	100% Silicone Polyester Backing	1.57 lb./linear yard	210,000 Double Rubs	200 Hours Class 4	N/A	WS Bleach Cleanable (4:1)
54" Silica Hiatus     	7	100% Silicone Polyester Backing	1.71 lb./linear yard	500,000 Double Rubs	200 Hours Class 4.5	12.375" L, 24.5" W	WS Bleach Cleanable (4:1)
54" Silica Stride     	7	100% Silicone Polyester Backing	1.70 lb./linear yard	500,000 Double Rubs	200 Hours Class 4.5	24.75" L, 24.75" W	WS Bleach Cleanable (4:1)
55" Solace     	5	49% Polyester, 41% Post Industrial Recycled Polyester, 10% Post Consumer Recycled Polyester Acrylic Backing	0.90 lb./linear yard	100,000 Double Rubs	40 Hours Class 4	N/A	WS

EXPLANATION OF ACT ICONS FOR UPHOLSTERY

Fire Retardancy

Flammability testing determined as fabric's resistance to burning.

PASSES California 117 2013

Colorfastness to Wet and Dry Crocking

Colorfastness to wet & dry crocking refers to the rubbing off of color from the fabric onto clothing, hands or other materials and can occur under wet or dry conditions.

PASSES AATCC 8-1974 Dry Crocking: Class 4 minimum; Wet Crocking: Class 3 minimum

Colorfastness to Light

Colorfastness to light is the degree to which fabric will retain its color when exposed to light.

PASSES AATCC 16A-1974 or AATCC 16E-1976; Class 4 minimum at 40 hours

NOTE: Class 4 minimum at 60 hours is recommended for direct sunlight exposure situations.

Physical Properties

3 physical property tests include: brush pill test to determine a fabric's pilling. Breaking/tensile strength is the ability of a fabric to withstand tension without breaking or tearing. Seam slippage is the pulling apart of fabrics at the seams.

PASSES Brush Pill ASTM D3511, 3-4 minimum Breaking Strength ASTM D3597-D1682-64 (1975) 50 lbs. minimum in warp & weft

Abrasion

Abrasion is the ability of a fabric to withstand damage from wear and rubbing. There is a general contract specification as well as heavy duty specification.

PASSES

 (Heavy Duty) ASTM 3597 modified (#10 cotton duck); 30,000 double rubs Wyzenbeek Method or ASTM D4966 (with 21 oz. weight); 40,000 rubs Martindale Method

Cleaning Code Definitions

W Water-based foam or cleaner.

WS Water-based cleaning agents or foam.

Manufacturer recommends using a damp warm cloth after cleaning with bleach solution or Virox 5 followed by a dry clean cloth.

Please visit manufacturer's website for cleaning guide at www.themomgroup.com

MOMENTUM
T E X T I L E S

For additional colors or to view our entire fabric collection, visit allseating.com

72^{HR} EXPRESS **5^{DY} EXPRESS**

Toronto Office: 5800 Avebury Road, Unit 3, Mississauga, ON L5R 3M3

Chicago Office: Suite 210, 325 North Wells Street, Chicago, IL 60654

New York Showroom: 1140 Broadway, Suite 902, NYC 10001

www.allseating.com T 1 800 563 3502 F 1 800 272 9911

*By appointment only. SKU: BF9943 Printed in Canada 03/2017

allseating 