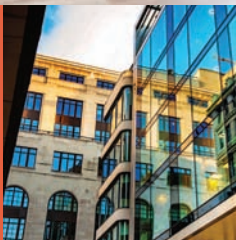




education



HPFi





Spaces for Learning

The days of the chair and desk are gone

Higher education learning environments are now community spaces, where furniture supports the gathering and exchanging of ideas. Furniture for education also needs to set the school apart, making a strong first impression to prospective students and guests while enduring the daily wear-and-tear of high traffic areas.

Shown this spread: **Accompany** lounge seating, **Eve** lounge seating, **Flex Lounge**, **Flex** tiered seating, **Flex** ottomans and stools, **Genesis** lounge seating, **Stax** guest seating, **Hyperwork Education** casegoods, **Matrix** tables and **Milan** tables.





Collaboration Higher Education



Enter active educational space

Inspiring spaces can lead students to innovation and collaboration in and out of the classroom. Furniture within these educational spaces must support evolving approaches to learning.



Shown this spread: **Flex** tiered and **Flex** ottoman seating (left); **Hyperwork Education** casegoods, **Eve** lounge seating, **Genesis** lounge seating, **Accompany** lounge seating and **Flex Lounge** seating.





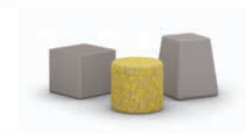
From the beginning, learner-centered spaces

Providing students with nontraditional spaces, outside of the standard classroom structure, leads them to view learning as a continual, ongoing process versus one that is solely reserved for the classroom.



Collaboration Primary Education

Shown this spread: **Evette** lounge seating, **Eve** lounge seating, **Flex Lounge** seating, **Eve** table, **Flex** ottomans and **Hyperwork Education** casegoods.



Environments to stimulate the learning process

Gathering spaces provide individual students or small groups with alternative areas conducive to learning, encouraging engagement in collaborative group work or individual learning moments outside of the classroom.





Study spaces easily become powered gathering spaces

Reconfigurable spaces can function as breakout areas to meet unique learning styles of students and leaders. Booth seating provides a sense of privacy and bench seating allows group meetings and presentations - all blend together into designed spaces that can evolve throughout the day into versatile breakout spaces.

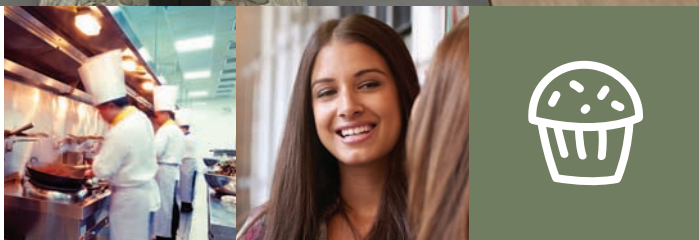


Breakout

Dining

Diverse spaces do more with less

Dining spaces aren't only about food; they're a hub for studying, camaraderie and connectivity. Spaces rarely serve just one purpose; more often than not, they offer a variety of physical spaces where students can eat, socialize, network, study, and relax.



Shown this spread: **Eve Oasis** lounge seating, **Milan** tables, **Stax** guest seating, **Matrix** tables, **Flex** stools, **Flex Lounge** seating and table and **Flex** ottomans.





Office & Administration

The structure behind open spaces

Behind every teaching team is a group of leaders that direct the educational program. Balancing private meeting spaces with open, collaborative space design is the challenge of every administration.

Office spaces are some of the most in-demand in the education facility. Private offices, meeting areas and administrative areas must be open, flexible and encourage communication and efficiency.



Shown this spread: **Atlas** casegoods, **Hyperwork** tables, **Hyperwork** casegoods, **1200 Series** office seating and **Timbre Stool** guest seating.



Balancing private and public spaces

Administration areas must be high-performance office spaces that allow both private and public interaction. Factors that influence furniture specification are electronic equipment and technology requirements, acoustical requirements, filing/storage requirements and varying degrees of private or semi-private workspace definition.



Shown on cover: **Matrix** tables,
Hyperwork Education caseworks,
Flex Lounge, **Flex** ottomans and
Eve lounge seating.



All HPFi® seating products in this brochure are certified to level® 2. level, BIFMA's sustainability certification program for furniture, is a comprehensive and transparent third-party certification program. The level mark attests that the product, our manufacturing facilities and our company have been evaluated against the multi-attribute criteria of the ANSI/BIFMA e3 Furniture Sustainability Standard.

1104 Bedford Street
High Point, NC 27263

(p) 800.447.3462
(f) 800.231.6784

www.hpfi.com

©2018 HPFi
HPFi_Education_080818

