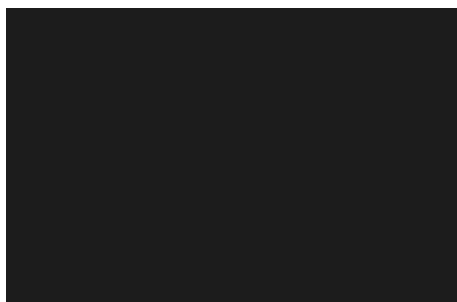


ROUILLARD

WORKPLACE SAVOIR-FAIRE

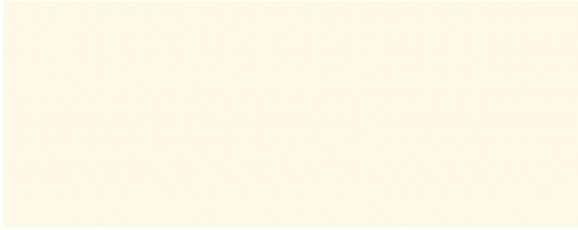


Finishes

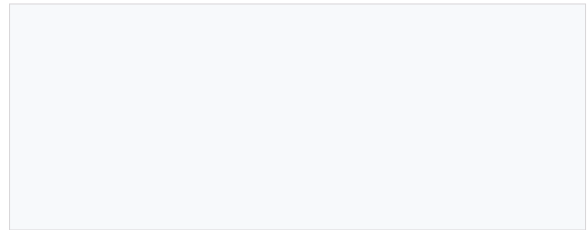
TABLE
CREDENZA
MEDIA TECHNOLOGY

THERMALLY FUSED (LPL) AND HIGH PRESSURE (HPL)

SOLID COLOR



Antique White 5/8" 11/16" 13/16" 1" 1"KE



White 5/8" 11/16" 13/16" 1" 1"KE



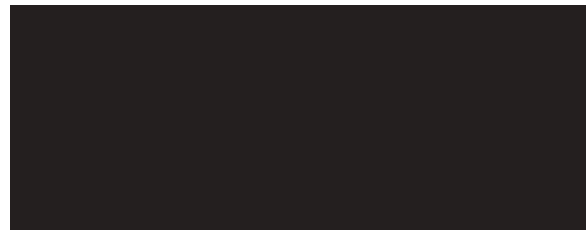
Canadian Grey 5/8" 11/16" 13/16" 1" 1"KE



Ingot Grey 5/8" 11/16" 1"KE

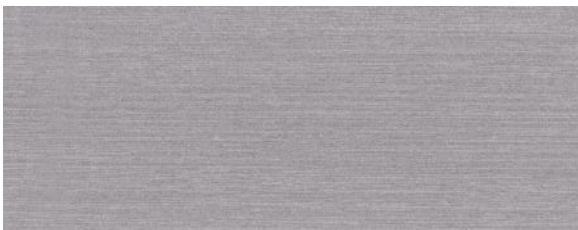


Charcoal 5/8" 11/16" 13/16" 1" 1"KE



Black 5/8" 11/16" 13/16" 1" 1"KE

WOOD GRAIN



Stainless 5/8" 11/16" 13/16" 1" 1"KE



White Ash 5/8" 11/16" 13/16" 1" 1"KE



Natural Ash 5/8" 11/16" 1"KE

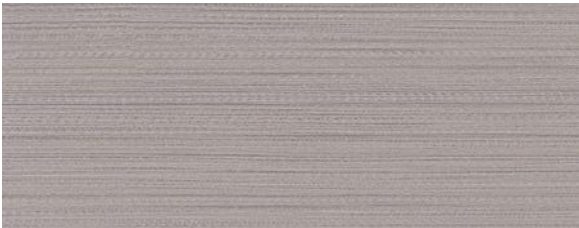


Weather Ash 5/8" 11/16" 1"KE

WOOD GRAIN



Neutral Twill 11/16" 13/16" 1" 1"KE



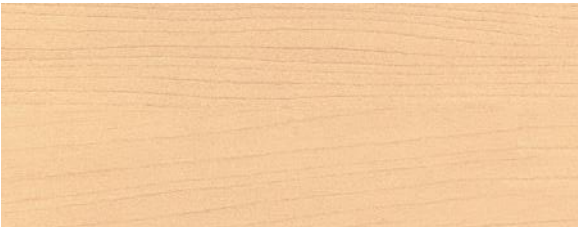
Sarum Twill 11/16" 13/16" 1" 1"KE



Earthen Twill 11/16" 1"KE



Graphite Twill 11/16" 13/16" 1" 1"KE



Hard Rock Maple 5/8" 11/16" 1 3/16" 1" 1"KE



Inspiration 5/8" 11/16" 1 3/16" 1" 1"KE



Chesnut Woodline 5/8" 11/16" 13/16" 1" 1"KE



Elegance 5/8" 11/16" 13/16" 1" 1"KE



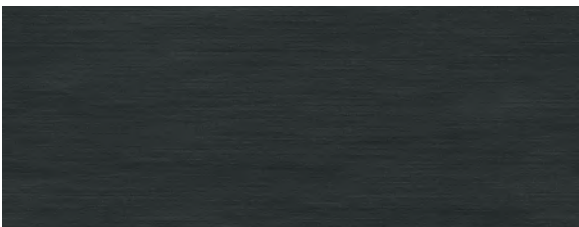
Smokey Brown Pear 5/8" 11/16" 13/16" 1" 1"KE



Chill 5/8" 11/16" 13/16" 1" 1"KE



Haze 5/8" 11/16" 13/16" 1" 1"KE



Storm 5/8" 11/16" 13/16" 1" 1"KE

CHART

Color	Code	Reference		2mm Edge			3mm Edge	
		Uniboard (LPL)	Formica (HPL)	LPL 5/8"	HPL 11/16"	Knife Edge HPL 1"	HPL 13/16"	HPL 1"
Solid Color	Antique White	B	810 OU-810-58	●	●	●	●	●
	White	Z	555 949-58	●	●	●	●	●
	Canadian Grey	G	168 OU-168-58	●	●	●	●	●
	Charcoal	F	123 OU-123-58	●	●	●	●	●
	Ingot Grey	L	828 OU-828-58	●	●	●	N/D	N/D
	Black	N	631 909-58	●	●	●	●	●
Wood Grain	Stainless**	A	961 OU-961-58	●	●	●	●	●
	Inspiration	R	744 OU-744-58	●	●	●	●	●
	Elegance	W	748 OU-748-58	●	●	●	●	●
	Hard Rock Maple	E	992 86992-58	●	●	●	●	●
	Chesnut Woodline	O	N/A 5884-58	●	●	●	●	●
	Smokey Brown Pear	P	N/A 5488-58	●	●	●	●	●
	Sarum Twill	U	N/A 8827-58	N/D	●	●	●	●
	Neutral Twill	C	N/A 8826-58	N/D	●	●	●	●
	Earthen Twill	T	N/A 8828-58	N/D	●	●	N/D	N/D
	Graphite Twill	H	N/A 8829-58	N/D	●	●	●	●
	Natural Ash	D	N/A 8843-58	●	●	●	N/D	N/D
	White Ash	J	N/A 8841-58	●	●	●	●	●
	Weather Ash	K	N/A 8842-58	●	●	●	N/D	N/D
	Storm	YC	H58 OU-H58-58	●	●	●	●	●
	Chill	YB	H56 OU-H56-58	●	●	●	●	●
	Haze	YD	H57 OU-H57-58	●	●	●	●	●

All laminates are matte finish except Chill, Haze and Storm are textured finish.
 Please refer to the Uniboard chart for those finishes with the "OU" prefix.
 ** Stainless finish has always a 3mm edge.

EDGE

If custom laminate is selected, use one of these solid colors:



SEMI OPAQUE ACRYLIC



Blue (B)



Red (R)



Orange (O)



Yellow (Y)



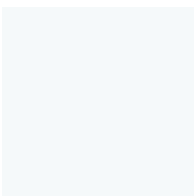
White (W)



Transparent (C)

* Finishes available only for modesty and privacy.

HIGH GLOSS DEPTH FINISHES (BRILLANTE)



Blanco (W)



Rojo (R)



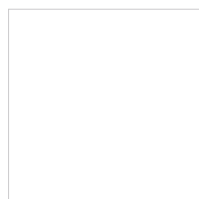
Antracita (G)



Black (N)

* Finishes available only for credenza door and media unit wall

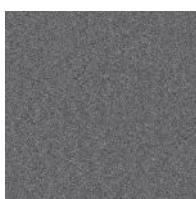
TEXTURED METALS / LEGS



White (W)



Platinum (P)



Charcoal (G)



Black (B)



Chrome (C)*

* Chrome finish is only available for the blade leg in Zetti Collection

HANDLES



White (W)



Stainless (P)



Black (N)



Chrome (C)

GROMMETS



White (W)



Platinum (P)



Black (N)

ROUILLARD

363, boul. des Chutes, Québec (QC) G1E 3G1 Canada
T. - 418 663-1411 NF. - 1855 459-1954

rouillard.ca

Slight variations between colors shown
and the actual finish may occur.