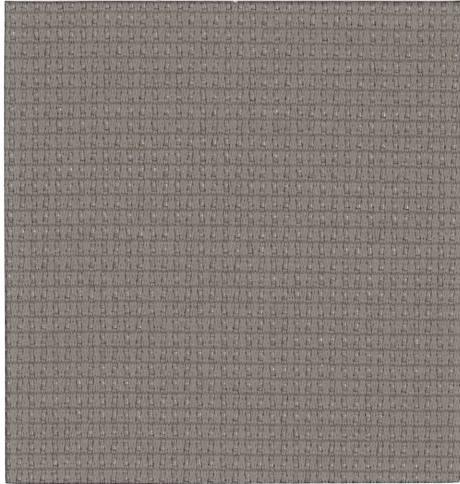
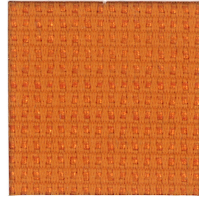


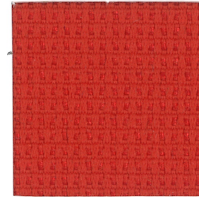
# To the Point 4732



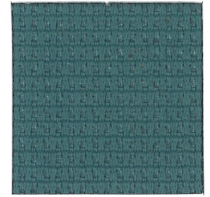
**Gravel**  
1413



**Marigold**  
1407



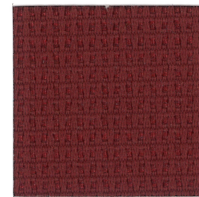
**Amaryllis**  
1408



**Bluegrass**  
1403



**Azalea**  
1410



**Currant**  
1411



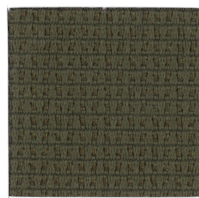
**Cobalt**  
1402



**Almond**  
1414



**Moss**  
1404



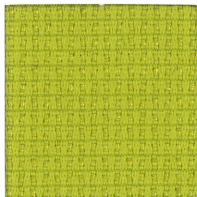
**Cattail**  
1417



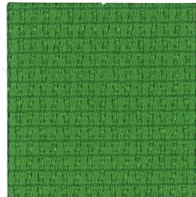
**Elderberry**  
1409



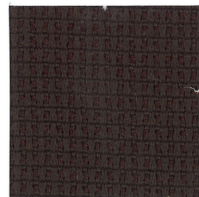
**Indigo**  
1401



**Kiwi**  
1405



**Parrot**  
1406



**Coffee**  
1416



**Cinder**  
1412



**Ebony**  
1415

# To the Point 4732

## Specifications

Content	44% post-consumer recycled polyester 56% polyester
Weight	12.4 ± 1.0 oz./lin. yd.
Width	54" min. useable
Repeat	.15" vertical   .125" horizontal
Backing	acrylic backcoating
Treatment	stain repellent

## Cleaning Code

Standard Care Label W-S. Clean with water based cleaning agents, foam or pure, water free solvents. Vacuuming or light brushing is recommended to prevent dust and soil buildup.

## Miscellaneous


Proudly woven in North America supporting our local communities.

Application testing of this product is recommended. Colors may vary between dye lots. This is a directional fabric.

Visit [guilfordofmaine.com](http://guilfordofmaine.com) for samples.

## Performance

 Colorfastness to Light (AATCC 16.3 Option 3)  
**Grade 4 min. at 40 hours**

 Colorfastness to Crocking (AATCC 8)  
**Grade 4 min. dry & Grade 3 min. wet**

 Breaking Strength (ASTM D5034)  
**295 lbf warp and 330 lbf fill**

Seam Slippage (ASTM D4034)  
**110 lbf warp and 85 lbf fill**

Pilling Resistance (ASTM D3511)  
**Class 4 min.**

 Flammability  
**CA Technical Bulletin 117-2013 Section 1  
NFPA 260/UFAC Fabric Classification - Class I**

\* Abrasion (ASTM D4157)  
**140,000 double rubs cotton duck**

## Sustainability



\*Certification Marks owned by the Association for Contract Textiles, Inc.