



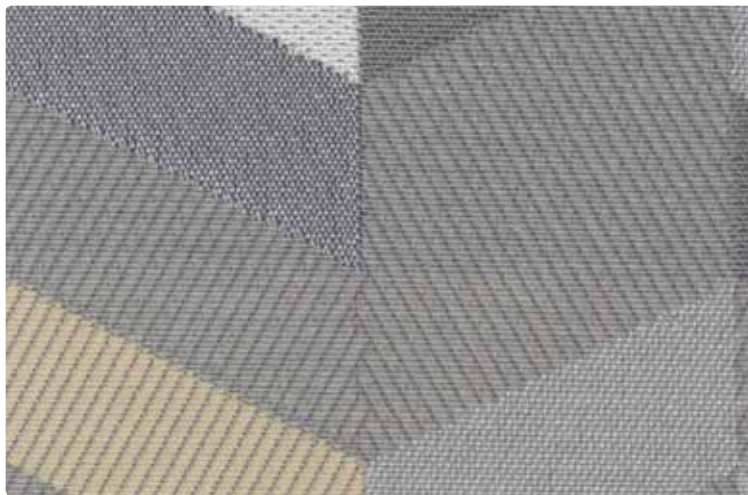
Grove, 001 Shield



Chalet, 002 Pick



Fluent Crypton, 001 Lynx



Parquet, 001 Cityscape



Lithe, 007 Neutral



Crew, 003 Dock



Brio, 008 Decode



Chalet, 008 Treadle



Fluent Crypton, 024 Steady



Instill, 001 Page



Instill, 002 Limestone



Instill, 019 Koala



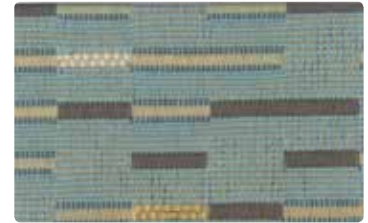
Instill, 020 Dorsal



Span, 002 Spirit



Lithe, 005 Coastal



Brio, 004 Dive



Lithe, 008 Safari



Crew, 006 Cork



Fluent Crypton, 012 Bayou



Grove, 005 Blueprint



Chalet, 010 Batten



Crew, 009 Soak



Instill, 007 Shaker



Instill, 008 Doe



Instill, 003 Bobwhite



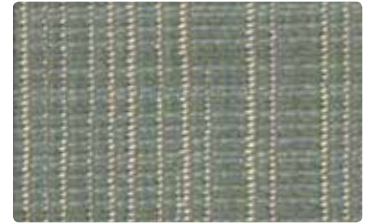
Instill, 004 Loafer



Lithe, 001 Orchid



Chalet, 012 Roller



Crew, 004 Topiary



Span, 004 Celestite



Lithe, 003 River



Fluent Crypton, 013 Bottle



Parquet, 005 Mosaic



Brio, 002 Atmosphere



Fluent Crypton, 014 Cadet



Instill, 017 Synth



Instill, 014 Quail



Instill, 015 Britannic



Instill, 021 Stealth

**Brio
466386**

Grade 7

Content: 55% Polyester, 29% Post-Industrial Recycled Polyester, 16% Post-Consumer Recycled Polyester

Finish/Backing: Crypton®

Width: 55"

Repeat: 19 ¾" V, 14 ¾" H, Suitable for non-match application

Abrasion: 90,000 double rubs

**Chalet
466324**

Grade 7

Content: 100% Solution-Dyed Polyolefin with Silver-Based Antimicrobial

Finish: PFOA-Free Stain Resistant

Width: 54"

Repeat: ¼" V, 1 ¼" H, Suitable for non-match application

Abrasion: 100,000 double rubs

**Crew
466149**

Grade 7

Content: 100% Polyester

Finish/Backing: Crypton®

Width: 54"

Repeat: 14" V, 14 ½" H, Suitable for non-match application

Abrasion: 90,000 double rubs

**Fluent Crypton
466073**

Grade 7

Content: 52% Polyester, 31% Post-Industrial Recycled Polyester, 17% Post-Consumer Recycled Polyester

Finish/Backing: Crypton®

Width: 54"

Abrasion: 100,000 double rubs

**Grove
466344**

Grade 7

Content: 56% Post-Industrial Recycled Polyester, 44% Post-Consumer Recycled Polyester

Finish/Backing: Crypton® Green

Width: 54"

Repeat: 11" V, 14 ¾" H, Suitable for non-match application

Abrasion: 70,000 double rubs



**Instill
466351**

Grade 6

Content: 100% Polyurethane

Finish/Backing: Ink-Resistant Protective Top Coat, Polyester

Width: 54"

Abrasion: 100,000 double rubs

**Lithe
466394**

Grade 7

Content: 50% Solution-Dyed Nylon, 50% Solution-Dyed Post-Industrial Recycled Nylon

Backing: Acrylic

Width: 54"

Repeat: 10 ¾" V, ¼" H, Suitable for non-match application

Railroaded Repeat: ¼" V, 10 ¾" H

Abrasion: 100,000 double rubs

**Parquet
466376**

Grade 7

Content: 100% Polyester

Finishing/Backing: Crypton®

Width: 54"

Repeat: 17 ¼" V, 14 ½" H

Abrasion: 75,000 double rubs

**Span
466395**

Grade 7

Content: 50% Solution-Dyed Nylon, 50% Solution-Dyed Post-Industrial Recycled Nylon

Backing: Acrylic

Width: 54"

Repeat: 14 ¾" V, 14 ¼" H, Suitable for non-match application

Abrasion: 100,000 double rubs

Design

Maharam Design Studio

Flammability

These textiles meet all appropriate flammability requirements for contract use.

Maintenance

Consult Maharam at 800.645.3943 or visit maharam.com

Samples

To order samples, call 800.645.3943 or visit maharam.com

Environmental

These textiles offer reduced environmental impact.

Complete product information at maharam.com

© 2018 Maharam



5800 Avebury Road, Unit 2
Mississauga, ON L5R 3M3

*325 North Wells Street, Suite 210
Chicago, IL 60654

*1140 Broadway, Suite 307
New York, NY 10001

*By appointment only

800.563.3502
800.272.9911 Fax
allseating.com